

Cut food prep time in half with the all-in-one food prep system.

Food prep has never been easier with the Saber King® all-in-one food prep system. This food prep system not only provides maximum flexibility for your ever-changing menus but eliminates the unnecessary space needed to house other costly slicing equipment. Saber King® was designed with color-coded interchangeable blade sets to quickly identify food type and cut; allowing operators to slice, dice, wedge and chop produce from a head of lettuce to four tomatoes in one single motion.

- Save money, time and labor with the all-in-one food prep system
- Prep faster and more efficient with over \$600 of savings per year
- Slice tomatoes 4x faster by slicing 4 at a time
- Patented blade covers improve safety and are easy to clean

Food prep plays a critical role when it comes to operational efficiency and speed of service. Operators spend countless hours preparing food often using expensive equipment tailored for one product. **Saber King® is truly the first all-in-one food prep system that includes a multi-purpose chassis with easy interchangeable blade sets to accommodate all your cutting needs.**



Save Money, Time and Labor

Slice multiple products using one single fixture. Maximize productivity up to **30 minutes of labor savings per day** during operation and cleaning.



Faster Prep Time, Minimal Waste

Improved slice consistency increases speed and response time when cutting large volumes of food, **making food prep time faster and more efficient** with minimal waste.



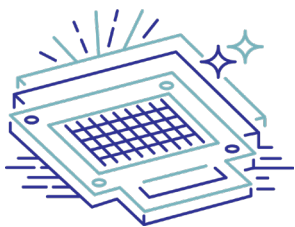
Improved Safety

Our **patented blade covers, blue guided touch points** and **secondary safeguard latch** help protect operators from the cutting blades when slicing and cleaning, **lowering the risk of injury during use.**



Easy to Clean

Cleaning blade cartridges are safe and easy thanks to the integrated handles, **giving operators a firm grip away from the blades** when cleaning.



Easy to Use

Help to quickly identify any food type with **easy interchangeable color-coded blade cartridges.** Quickly switch between different types of food and cuts to **provide maximum versatility and keep up with ever-changing menus.**

To learn more and see **Saber King** in action, visit saberking.com
To contact a Saber King expert today, go to saberking.com/contact/